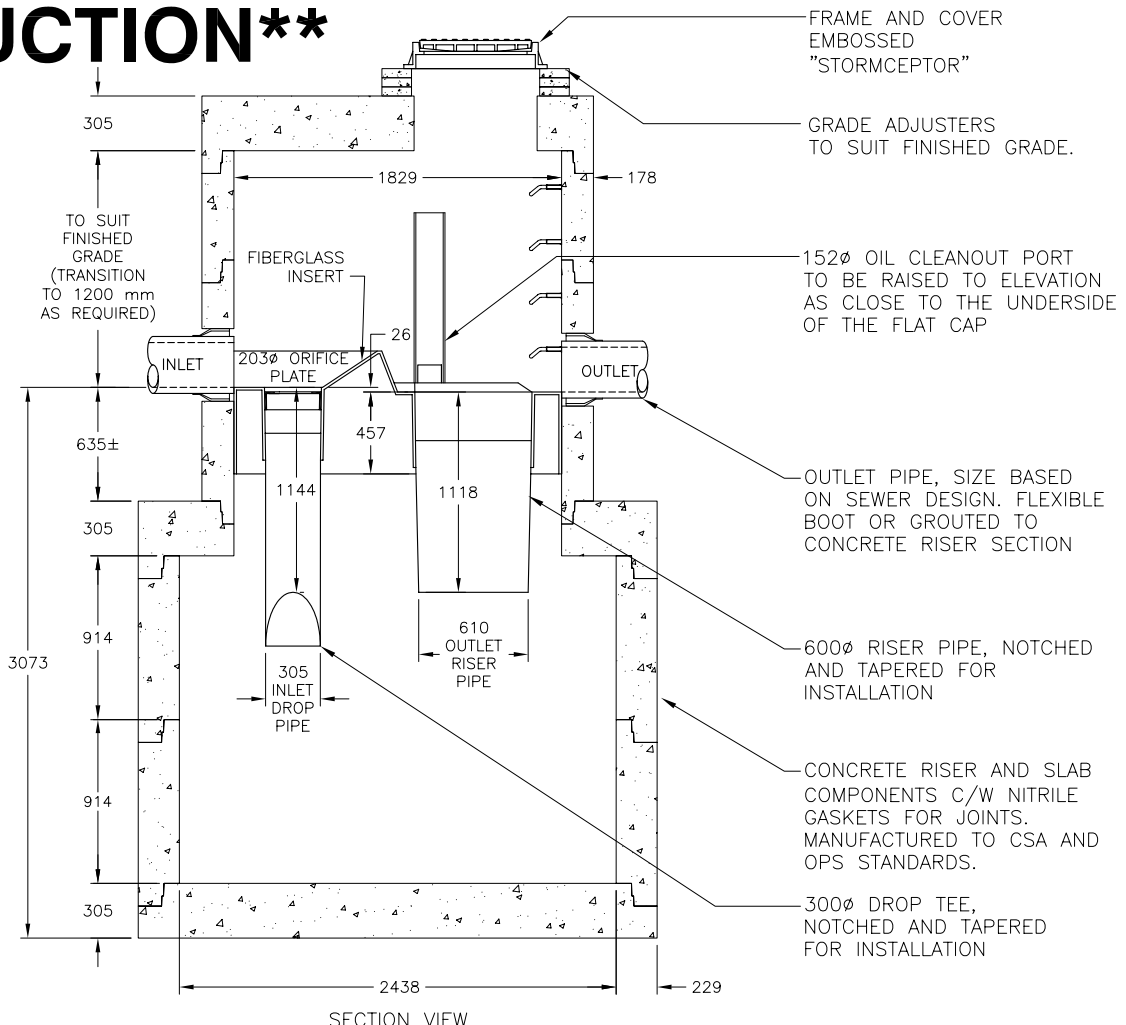


****NOT FOR CONSTRUCTION****



STC 2000 CAPACITIES		
SEDIMENT CAPACITY (L)	OIL CAPACITY (L)	TOTAL CAPACITY L (IMP GAL)
7700	2890	11000 (2420)

THE STORMCEPTOR SYSTEM IS PROTECTED BY ONE OR MORE OF THE FOLLOWING PATENTS:

- CANADIAN PATENT NO. 2,009,208
- CANADIAN PATENT NO. 2,137,942
- CANADIAN PATENT NO. 2,175,277
- CANADIAN PATENT NO. 2,180,305
- CANADIAN PATENT NO. 2,180,383
- CANADIAN PATENT NO. 2,206,338

R.R. 2, CAMBRIDGE, ONTARIO N1R 5S3
 TEL. 519-622-7574
 1-888-888-3222
 FAX 519-621-8233 MAIN OFFICE
 519-621-7750 TECHNICAL SERVICES

**IN-LINE STORMCEPTOR
 MODEL STC 2000**

DATE: 14 OCT 03	D.B. S.K.	UNITS: METRIC	DWG No. G-5
-----------------	-----------	---------------	--------------------