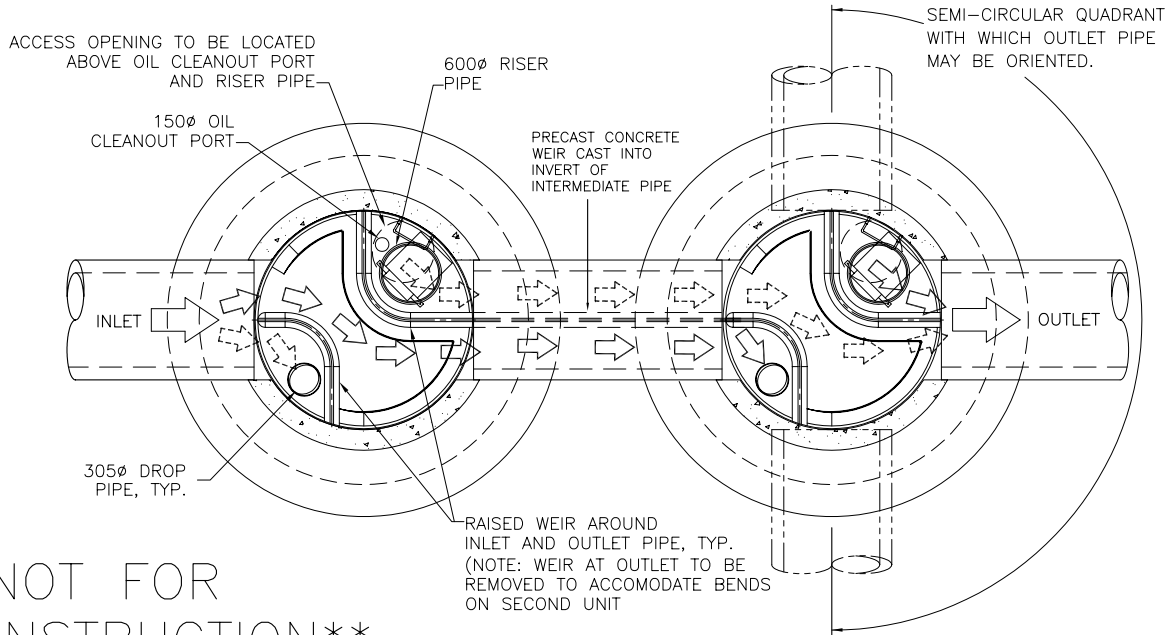
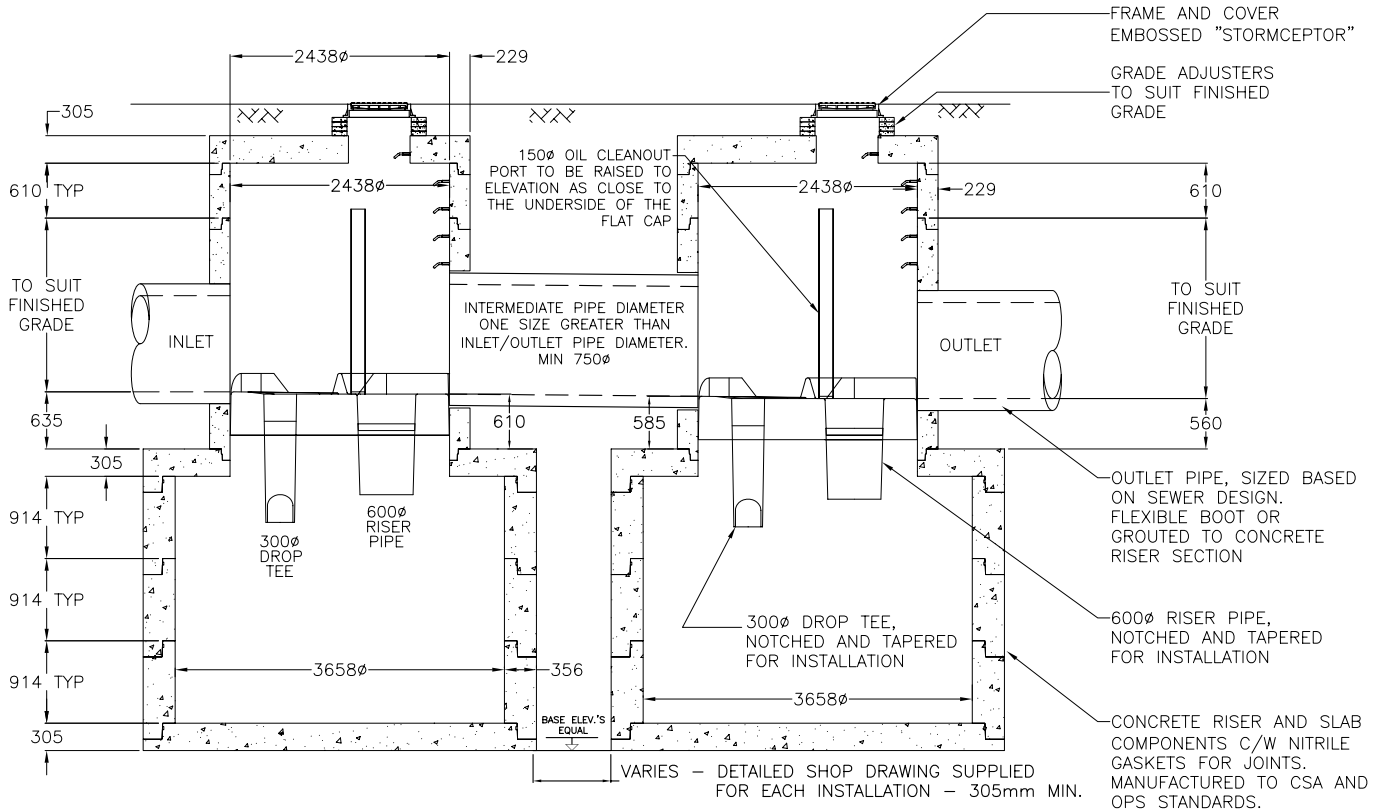


STC 14000 CAPACITIES			
DROP/RISER PIPE (mm) (LP)	SEDIMENT CAPACITY (L)	OIL CAPACITY (L)	TOTAL CAPACITY [L (IMP GAL)]
1118	53890	11700	66410 (14610)



**\*\*NOT FOR CONSTRUCTION\*\***

PLAN VIEW



SECTION VIEW

THE STORMCEPTOR SYSTEM IS PROTECTED BY ONE OR MORE OF THE FOLLOWING PATENTS:

- CANADIAN PATENT NO. 2,009,208
- CANADIAN PATENT NO. 2,137,942
- CANADIAN PATENT NO. 2,175,277
- CANADIAN PATENT NO. 2,180,305
- CANADIAN PATENT NO. 2,180,383
- CANADIAN PATENT NO. 2,206,338



R.R. 2, CAMBRIDGE, ONTARIO N1R 5S3  
 TEL. 519-622-7574  
 1-888-888-3222  
 FAX 519-621-8233 MAIN OFFICE  
 519-621-7750 TECHNICAL SERVICES

**SERIES STORMCEPTOR  
 MODEL STC 14000**