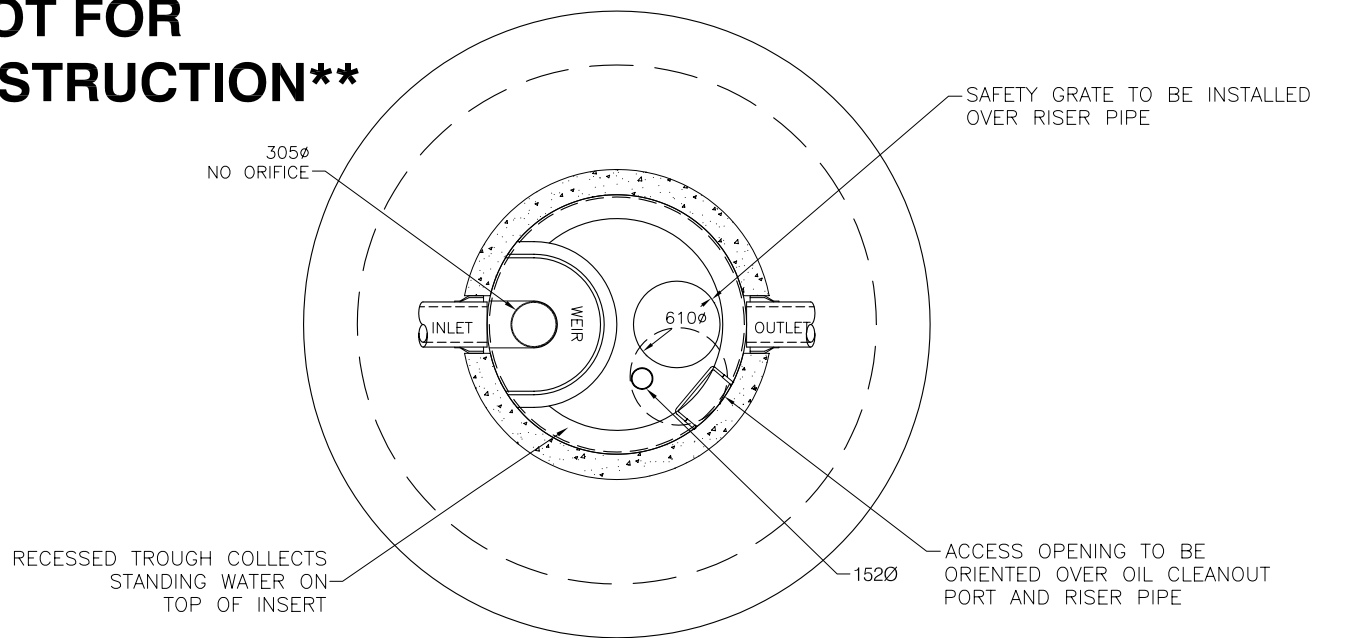
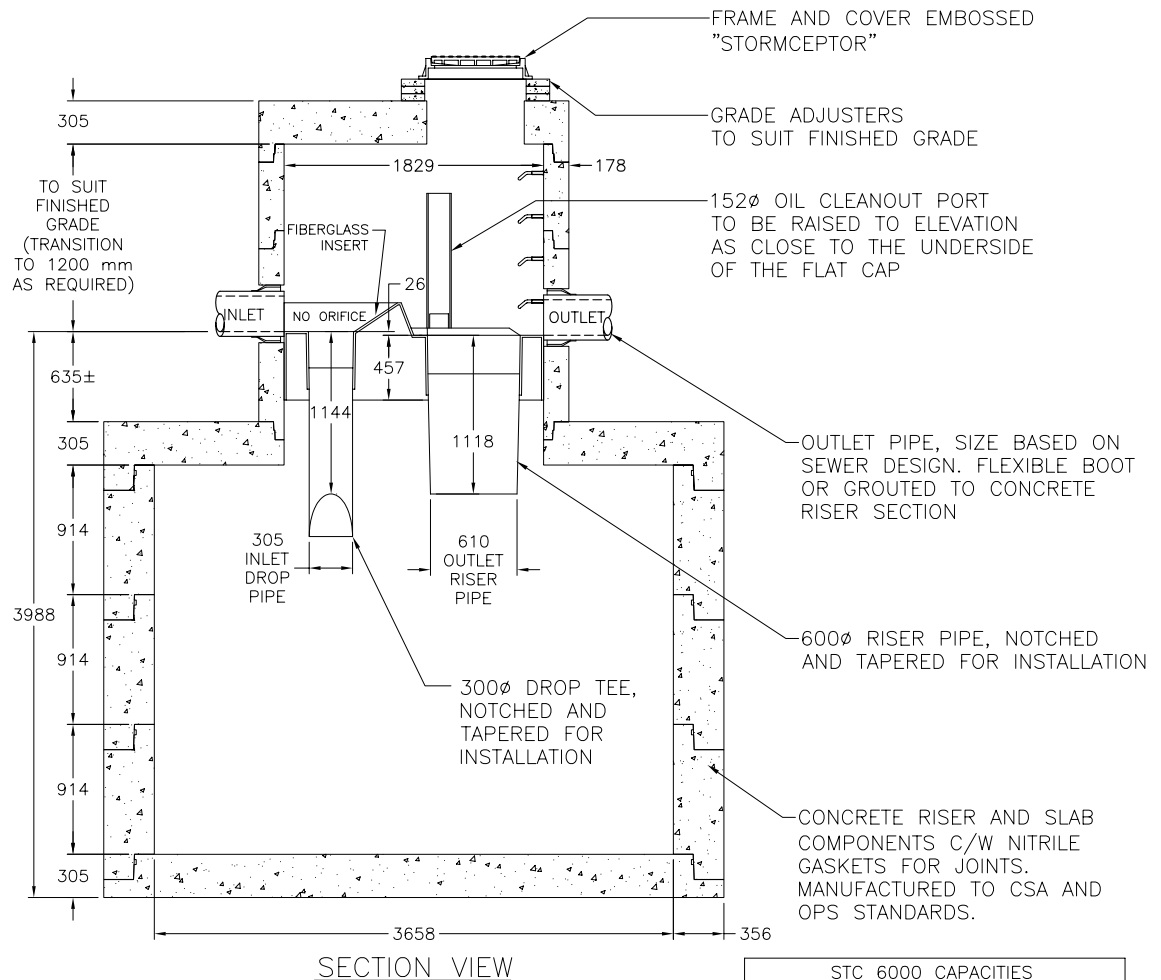


** NOT FOR CONSTRUCTION **



PLAN VIEW



SECTION VIEW

STC 6000 CAPACITIES		
SEDIMENT CAPACITY (L)	OIL CAPACITY (L)	TOTAL CAPACITY L (IMP GAL)
26945	3930	31285 (6883)

THE STORMCEPTOR SYSTEM IS PROTECTED BY ONE OR MORE OF THE FOLLOWING PATENTS:

CANADIAN PATENT NO. 2,009,208
 CANADIAN PATENT NO. 2,137,942
 CANADIAN PATENT NO. 2,175,277
 CANADIAN PATENT NO. 2,180,305
 CANADIAN PATENT NO. 2,180,383
 CANADIAN PATENT NO. 2,206,338



R.R. 2, CAMBRIDGE, ONTARIO N1R 5S3
 TEL. 519-622-7574
 1-888-888-3222
 FAX 519-621-8233 MAIN OFFICE
 519-621-7750 TECHNICAL SERVICES

IN-LINE STORMCEPTOR MODEL STC 6000