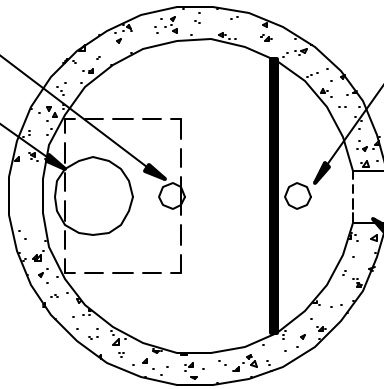


100 DIA. OIL CLEANOUT PIPE WITH CAP.

318 DIA. INLET/DOWN PIPE

100 DIA. OUTLET/RISER PIPE

250 PVC SDR35 GASKET  
CAST IN PLACE.



PLAN

RIM ELEVATION

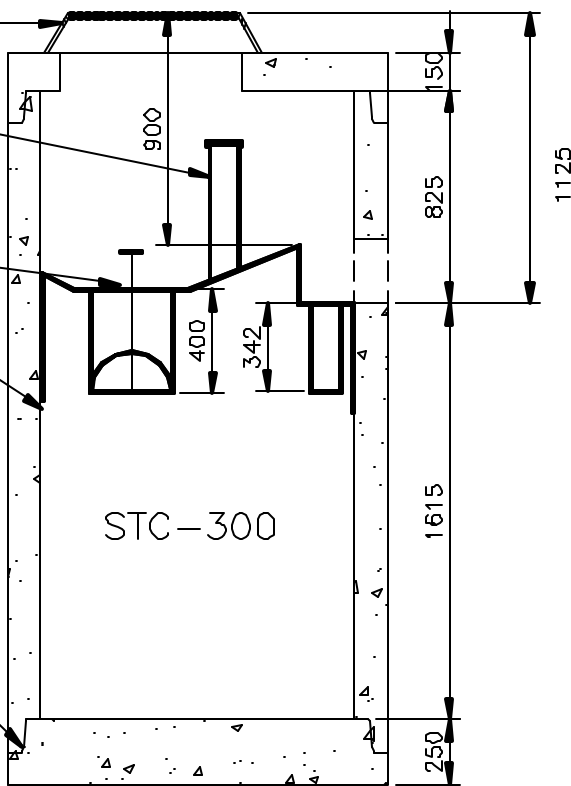
SLOTTED STORMCEPTOR  
FRAME AND COVER

OIL CLEANOUT CAP

HANDLE FOR REMOVEABLE TEE

FIBREGLASS INSERT

NITRILE GASKET (INSIDE)  
RUBBER GASKET (OUTSIDE)



PROFILE VIEW

**NOTES:**

1. TYPE 50, SRC CONCRETE STRENGTH = 30MPa. (28 DAYS).
2. MINIMUM CONCRETE COVER = 25mm.
3. REINFORCING, DEFORMED BARS, CSA G30.12, Fy = 400MPa.
4. WELDED WIRE MESH, CSA G30.3, Fy = 450MPa.
5. DESIGNED FOR HS-20 LOADING.
6. THE STORMCEPTOR IS PROTECTED BY CANADIAN PATENT NO 2009208, 2137942, 2175277, 2180305 AND US PATENT NO. 4985148, 5498331, 5725760, 5753115, 5849181.
7. MINIMUM RIM TO INLET INVERT SHOWN, IS WITHOUT MANHOLE BARRELS & COLLARS. MINIMUM MAY BE REDUCED, DEPENDING ON PIPE SIZE, BY SPECIAL ORDER.
8. WEIR ELEVATION MUST BE ABOVE HIGHEST DOWNSTREAM WATER LEVEL
9. INLET INVERT 75mm HIGHER THAN OUTLET INVERT FOR INLINE USE

THIS DOCUMENT IS THE PROPERTY OF LAFARGE AND IS ISSUED WITH THE UNDERSTANDING THAT IT WILL NOT BE REPRODUCED NOR USED FOR ANY PURPOSE EXCEPT THAT FOR WHICH IT HAS BEEN ISSUED AND THAT IT SHALL BE RETURNED ON DEMAND.



MODEL: STORMCEPTOR STC - 300  
PROJECT:  
CUSTOMER:

ISSUED FOR APPROVAL:

DRAWN	DATE	SCALE	DWG NO.	REV. NO.
AAG	14-NOV-01	1:30	SPEC.300 DWG	

