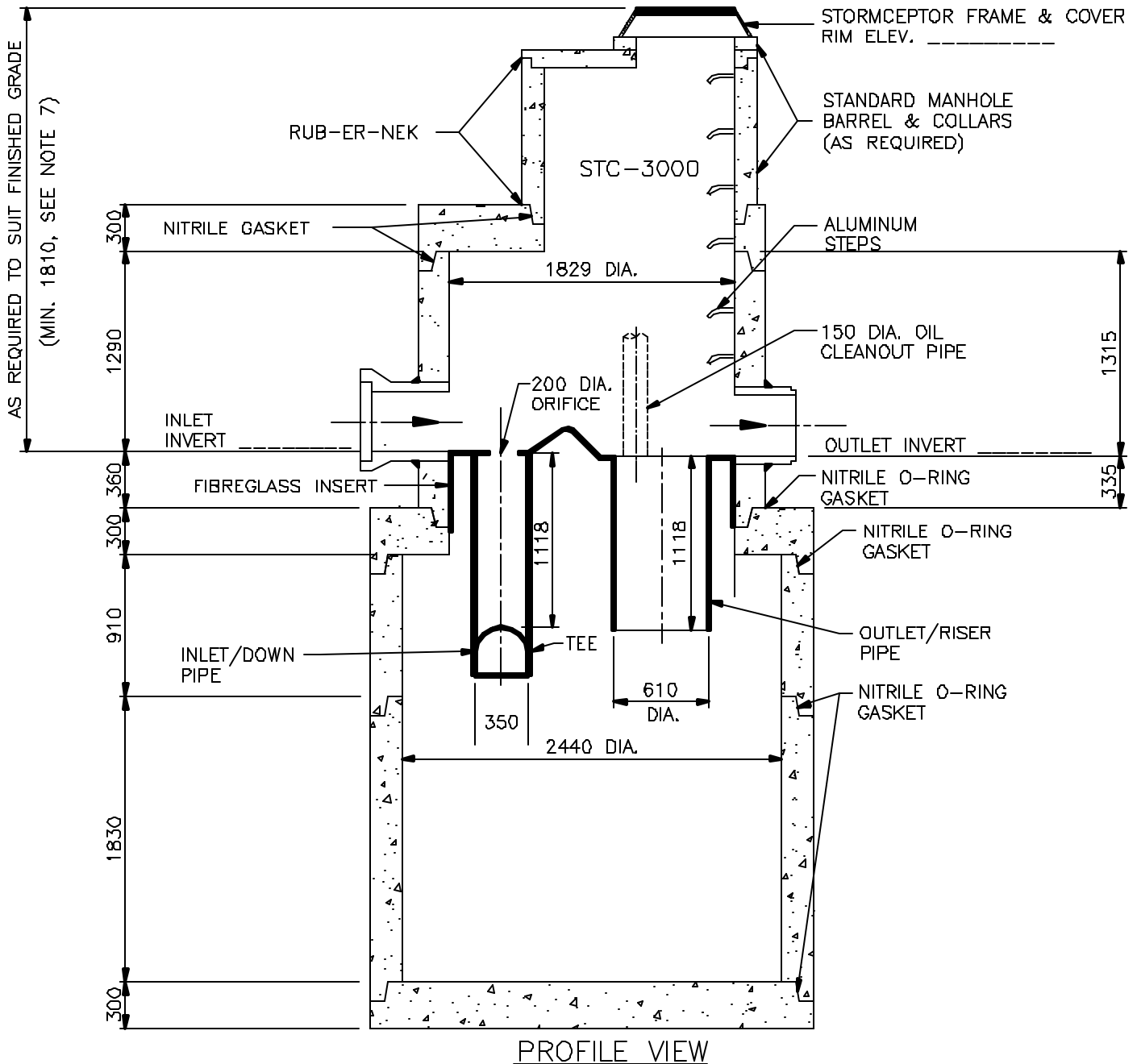
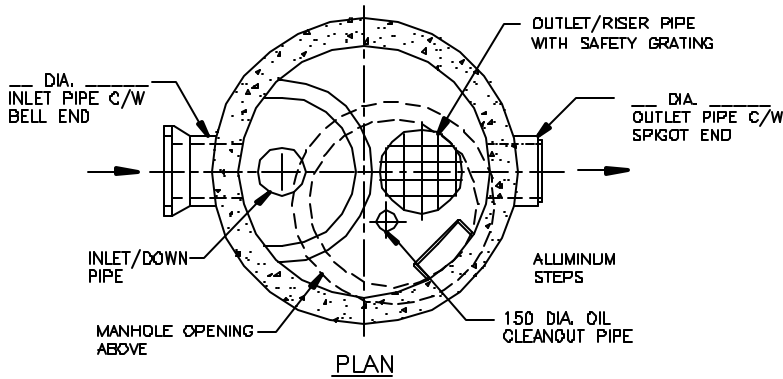


**NOTES:**

1. TYPE 50, SRC CONCRETE STRENGTH = 30MPa. (28 DAYS).
2. MINIMUM CONCRETE COVER = 25mm.
3. REINFORCING DEFORMED BARS, CSA G30.12,  $F_y = 400MPa$
4. WELDED WIRE MESH, CSA G30.3,  $F_y = 450MPa$ .
5. DESIGNED FOR HS-20 LOADING.
6. THE STORMCEPTOR IS PROTECTED BY CANADIAN PATENT NO. 200920B, 2137942, 2175277, 2180305 AND US PATENT NO. 498514B, 5498331, 5725760, 5753115, 5B491B1.
7. MINIMUM RIM TO INLET INVERT SHOWN, IS WITHOUT MANHOLE BARRELS & COLLARS. MINIMUM MAY BE REDUCED, DEPENDING ON PIPE SIZE, BY SPECIAL ORDER.
8. WEIR ELEVATION MUST BE ABOVE HIGHEST DOWNSTREAM WATER LEVEL.
9. INLET INVERT 25mm HIGHER THAN OUTLET INVERT FOR SINGLE INLET.
10. INSERT SECTION AVAILABLE IN A SHORTER HEIGHT FOR SHALLOW PIPE INSTALLATIONS.



THIS DOCUMENT IS THE PROPERTY OF LAFARGE AND IS ISSUED WITH THE UNDERSTANDING THAT IT WILL NOT BE REPRODUCED NOR USED FOR ANY PURPOSE EXCEPT THAT FOR WHICH IT HAS BEEN ISSUED AND THAT IT SHALL BE RETURNED ON DEMAND.



MODEL: STORMCEPTOR STC - 3000  
 PROJECT:  
 CUSTOMER:

ISSUED FOR APPROVAL

DRAWN:	DATE	SCALE	DWG NO	REVISION
	01-NOV-99	1:40	STC-3000	

